

Welcome Oklahoma

CCBHC Care

means a *healthier* Oklahoma



CCBHCs support whole-person wellbeing by providing:

- ▷ Mental health treatment
- ▷ Physical health screenings
- ▷ Substance use treatment
- ▷ Social support services



CCBHCs

are transforming

Oklahoma families





and
the *impact* of
losing funding...





...would *be* **DEVASTATING**



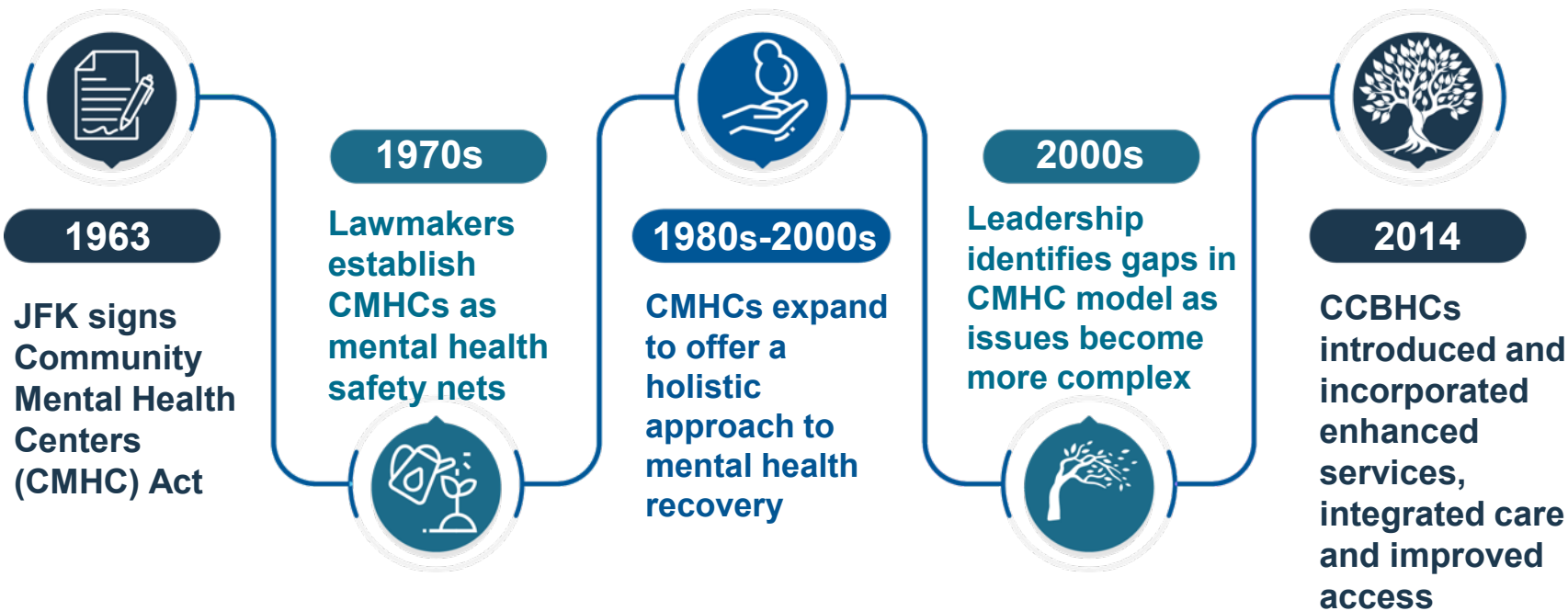
CCBHCs are *proven* for whole-person care



CCBHCs address issues that impact the wellbeing of all Oklahomans



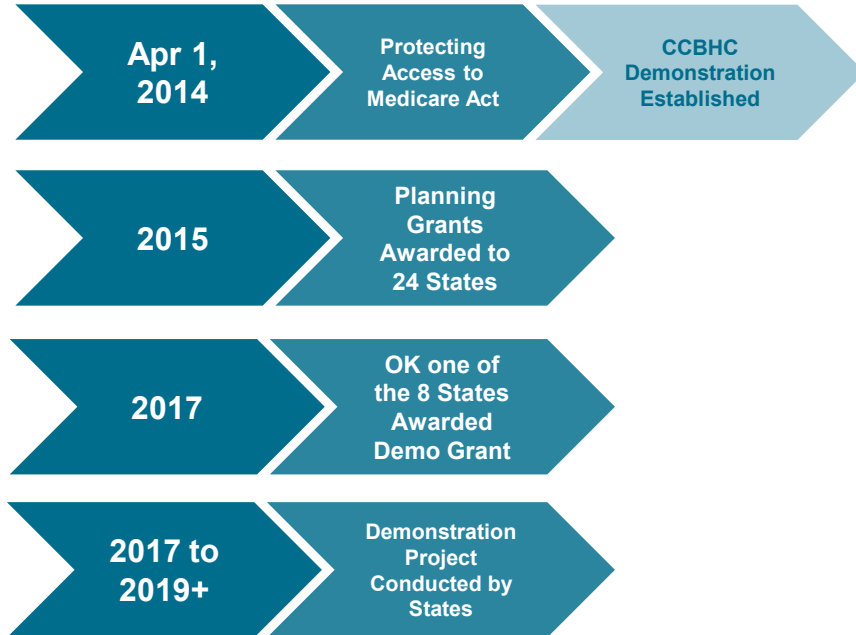
HOW DID CCBHCs *come about*?



CCBHCs are *still* in early stages



CCBHC Demonstration history shows why funding **MUST** continue



Savings
of more than
\$10 Million
in Tulsa County
since 2022

Increased Savings
benefit hospitals,
law enforcement
and
first responders

FCS CCBHC Demonstration is *working!*



Enhanced
federal match
rate of 90% for
CCBHC services



FCS
becomes
a CCBHC



Enhanced federal match
expires but CCBHC in
OK must continue!

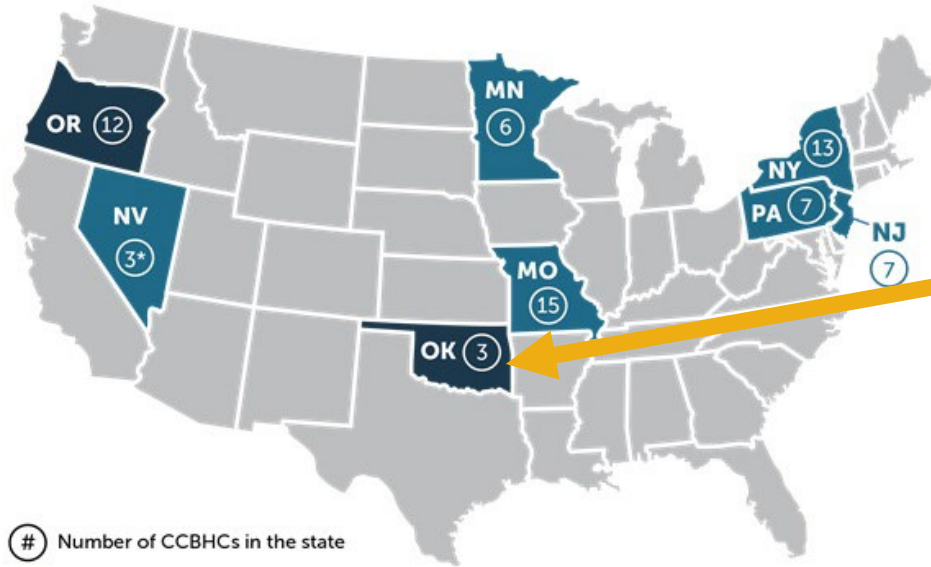


Proven Success from Inception to Outcome

OKLAHOMA helped pioneer CCBHCs



Our state has vetted this model and is a nationwide leader in behavioral health as a result



Number of CCBHCs in the state

■ Demonstration start date: April 1, 2017

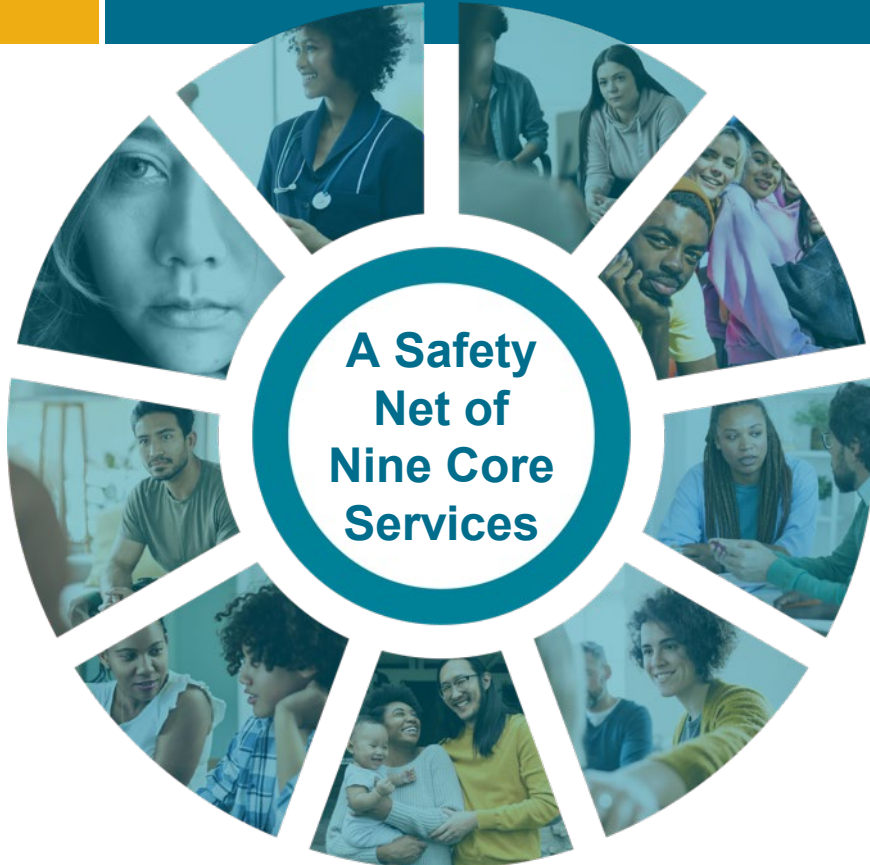
■ Demonstration start date: July 1, 2017

* Nevada initially certified four clinics. In March 2018, a CCBHC withdrew from the demonstration after Nevada revoked its certification.

Oklahoma led the way in CCBHC Care

First state to convert all CMHCs to CCBHCs

HOW DO CCBHCs *transform* lives?



Faster, Better Access to Services:

1. Mental health and substance use
2. Primary care screening/monitoring
3. Skills for improving health and daily life
4. 24/7 crisis services
5. Screening, diagnosis and risk assessment
6. Targeted case management
7. Community-based mental healthcare for veterans
8. Peer, family support counseling services
9. Patient-centered treatment planning

FCS served clients
5X faster
than the
national average

30% increase
in FCS services provided
to adults & children
most in need



FCS Crisis Care Continuum saved
\$4,813,161

in 2024 through diversions from:
Incarceration
Hospitals
First Responders



OKLAHOMA
needs a *proven* safety net

WHY CCBHCs *must continue* to grow



***One of the highest
prevalences in the US***

5th
in nation
for mental
illness
rates

***700,000-950,000
adult Oklahomans
have unmet needs
for recovery services***

16%
of Oklahomans
have a
substance use
disorder

SOCIAL DRIVERS *impact our* Oklahoma



Even with success of CCBHCs, Oklahoma faces challenges directly tied to funding for social determinants of health



Economic Stability
39th



Family/Community
40th



Poverty
44th



Healthcare
45th



Education
49th

2023-2024 numbers

Sources: <https://oklahomavoice.com/briefs/oklahoma-maintains-low-national-ranking-in-annual-child-well-being-study/>
<https://okpolicy.org/2023-census-data-oklahoma-ranks-as-sixth-poorest-state/>



Untreated mental health needs

impact families, schools, workplaces and the criminal justice system and can be addressed by whole-person care models.

CCBHCs are *best practice* for community mental health



CCBHCs reward reinvestment and partnerships

- ▷ Cost-based model **increases accountability**
- ▷ Enhances ease of **establishing local partnerships**
- ▷ Promotes **community-wide embedment**
- ▷ FCS has established **over 200 local embedments** in schools, prisons, etc.



CCBHCs *save* money



It's *when*, not *if* we pay for care

Without CCBHCs, people in need are faced with:

- ▷ Inadequate Access to Care
- ▷ More Expensive Care
- ▷ Unnecessarily Complicated Levels of Care



CCBHCs address *costly* mental healthcare needs



57%

received reduced time in a correctional facility after program participation

67%

showed clinically significant improvement in trauma symptoms from intake to most recent screening

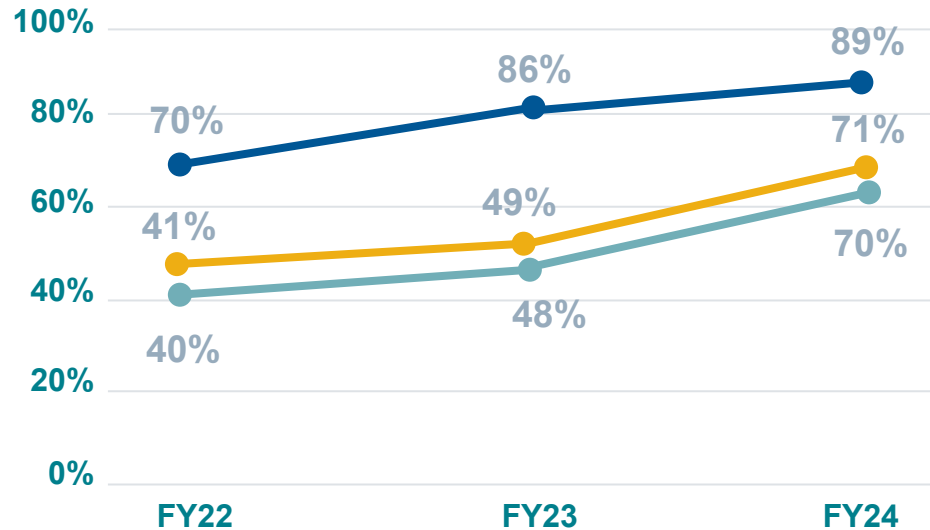
69%

showed clinically significant improvement in depression symptoms from intake to most recent screening

CCBHCs provide *whole-person care*



CCBHC outcomes in tobacco, alcohol and BMI measures



- BMI Adherence
- Tobacco Screening and Intervention Adherence
- Alcohol and Brief Counseling



CCBHCs
promote
whole-person
care by
addressing
nationwide
pain points

Family & Children's Services numbers from 2022 to 2024



“

CCBHCS have *dramatically increased* access to mental health and substance use disorder treatment...

Thank you Oklahoma