

CCBHC Care

for a healthier Oklahoma

Access » Savings » Outcomes



Family & Children's Services (FCS) is a Certified Community Behavioral Health Clinic (CCBHC)

CCBHCs *increase* patient access

Access Through School-Based Services

1,781

2022

78%

2,425

2023

INCREASE
in number of
clients served
2022 to 2024

3,169

2024

From 2022 to 2024, FCS saw a 78% increase in the number of clients reached through school-based services.

“Lorem ipsum dolor sit amet, consectetur adipiscing elit. Suspendisse posuere eu libero faucibus euismod. Morbi convallis sollicitudin nulla vel suscipit. Proin at ligula viverra, varius leo et, porta elit.

CCBHCs are able to see clients faster than the national average for services which means an increase in providing for people.

The NATIONAL AVERAGE for providing services is 48 DAYS

FCS served clients
5X faster
than the
national average

30% increase
in FCS services provided
to adults & children
most in need

Increased Access Reduces Expenses

28%
up in all
CCBHC services
including

23%
adult and psychiatry

5%
crisis intervention

Those with 0-1
hospital/ED visits
post crisis

98%
children
90%
adults

CCBHCs *save* the community money



FCS Crisis Care Continuum **SAVED**
\$4,813,161
in 2024 through
prevention, intervention and diversion





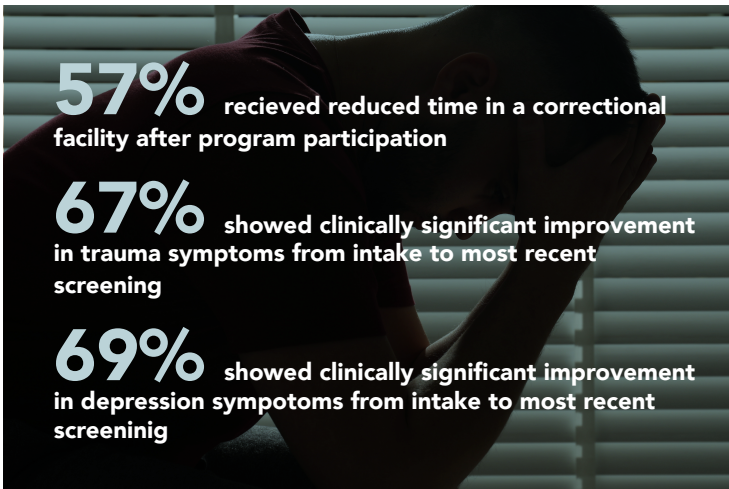
“Our Excellence in Mental Health demonstration program has shown that *treating mental health like all other health* is not only the right thing to do, *it’s the smart thing to do* . . . For too long, emergency rooms and law enforcement have served as the de facto mental health care delivery system in our country.

Certified Community Behavioral Health Clinics are changing that, helping people get the *comprehensive behavioral health care* they need, when they need it.

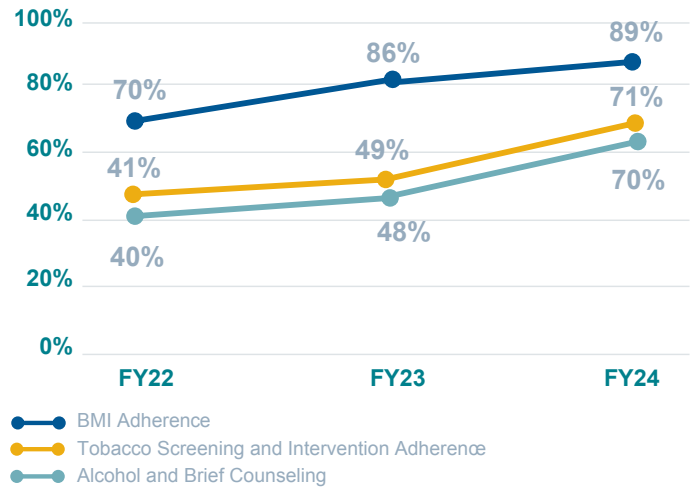
— Roy Blunt, former US Senator

CCBHC outcomes exponentially *impact* people

Jail Diversion Outcomes

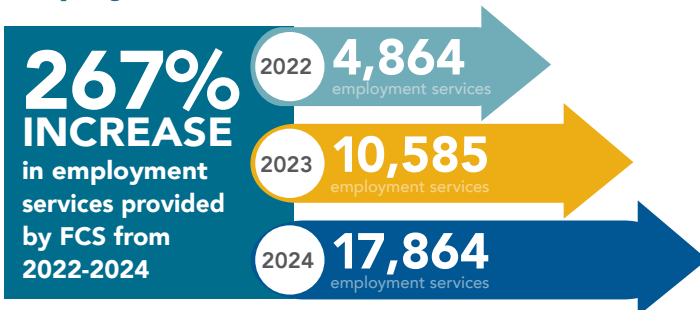


Tobacco, Alcohol and BMI Outcomes



Untreated mental health needs impact *families, schools workplaces and the criminal justice system* and can be addressed by whole-person care provided by CCBHCs.

Employment Services



IPS alone served 500 clients, and the average salary of those served was \$13.53/hour, nearly twice the federal minimum wage, and employees averaged 30 hrs./week.

Social Determinants of Health Outcomes



There was a reduction in hospitalizations for psychiatric challenges among both adult (82%) and child (93%) from baseline to reassessment.