

CCBHC Care

for a healthier Oklahoma

Access » Savings » Outcomes



Family & Children's Services (FCS) is a Certified Community Behavioral Health Clinic (CCBHC)

CCBHCs *increase* patient access

Access Through School-Based Services

1,781

2022

2,425

2023

3,169

2024

78%
INCREASE
in number of
clients served
2022 to 2024

From 2022 to 2024, FCS saw a 78% increase in the number of clients reached through school-based services.

CCBHCs serve all 77 Oklahoma counties with a no-wrong-door approach, **never turning away people in need** of behavioral health services. CCBHCs often function as a mental health safety net, **servicing people who do not have the means to access care elsewhere.**

CCBHCs are able to see clients faster than the national average for services which means an increase in providing for people.

The **NATIONAL AVERAGE** for providing services is **48 DAYS**

FCS served clients **5X faster** than the national average

30% increase in FCS services provided to adults & children most in need

Increased Access Reduces Expenses

28% up in all CCBHC services including

23% adult and psychiatry

5% crisis intervention

Those with 0-1 hospital/ED visits post crisis

98% children
90% adults

CCBHCs *save* the community money



FCS Crisis Care Continuum **SAVED**
\$4,813,161
in 2024 through prevention, intervention and diversion





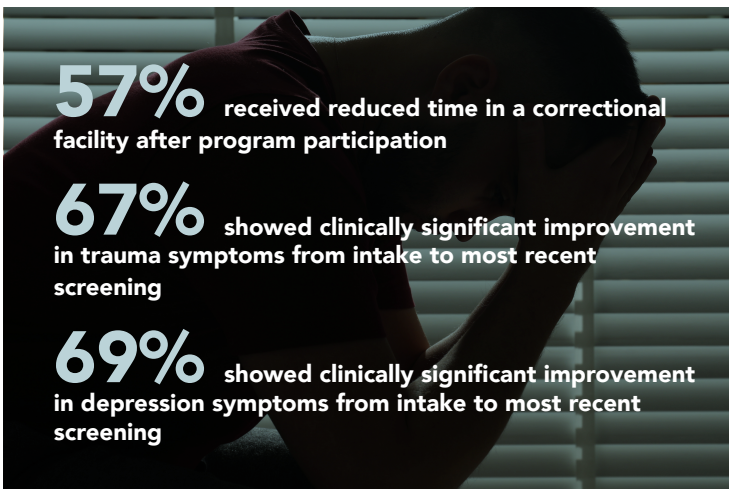
“Our Excellence in Mental Health demonstration program has shown that *treating mental health like all other health* is not only the right thing to do, *it’s the smart thing to do* . . . For too long, emergency rooms and law enforcement have served as the de facto mental health care delivery system in our country.

Certified Community Behavioral Health Clinics are changing that, helping people get the *comprehensive behavioral health care* they need, when they need it.

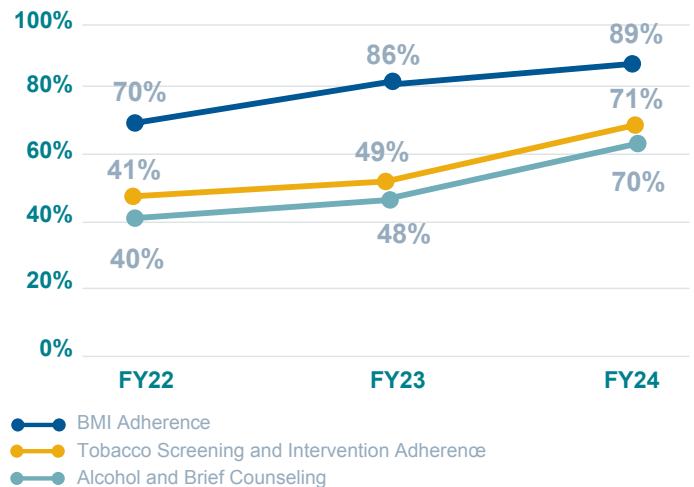
— Roy Blunt, former US Senator

CCBHC outcomes exponentially *impact* people

Jail Diversion Outcomes

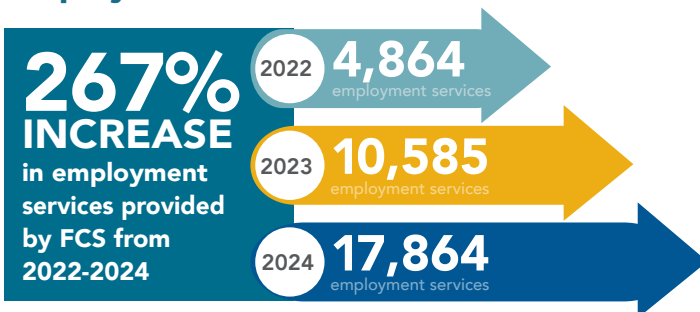


Tobacco, Alcohol and BMI Outcomes



Untreated mental health needs impact *families, schools workplaces and the criminal justice system* and can be addressed by whole-person care provided by CCBHCs.

Employment Services



IPS alone served 500 clients, and the average salary of those served was \$13.53/hour, nearly twice the federal minimum wage, and employees averaged 30 hrs./week.

Social Determinants of Health Outcomes



There was a reduction in hospitalizations for psychiatric challenges among both adult (82%) and child (93%) from baseline to reassessment.