

and
the *impact*
of losing funding
would be . . .

Scan to
learn more about
CCBHCs and
their impact.



DEVASTATING

CCBHCs enable clients to
get the care they need,
when they need it, while
alleviating the costly
burdens other institutions
would have to bear if
CCBHCs did not exist.

*FCS restores children's wellbeing,
heals victims of abuse and trauma,
strengthens individuals and families,
provides recovery support for adults
suffering from mental illness and
addictions and diverts individuals
from the criminal legal system.*

CCBHCs
are *transforming*
Oklahoma families



FCS Main Number
918.587.9471
COPES 24/7 Crisis Line
918.744.4800
CrisisCare Center
918.921.3200



Legacy Plaza West
5310 East 31 Street
Tulsa, Oklahoma 74135

Proven whole-person
care that addresses issues
impacting the wellbeing
of all Oklahomans



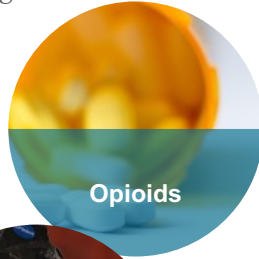
WHAT ARE CCBHCs?

A Certified Community Behavioral Health Clinic, or CCBHC, is a mental and behavioral health solution designed

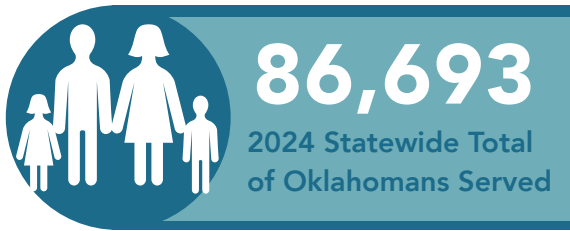
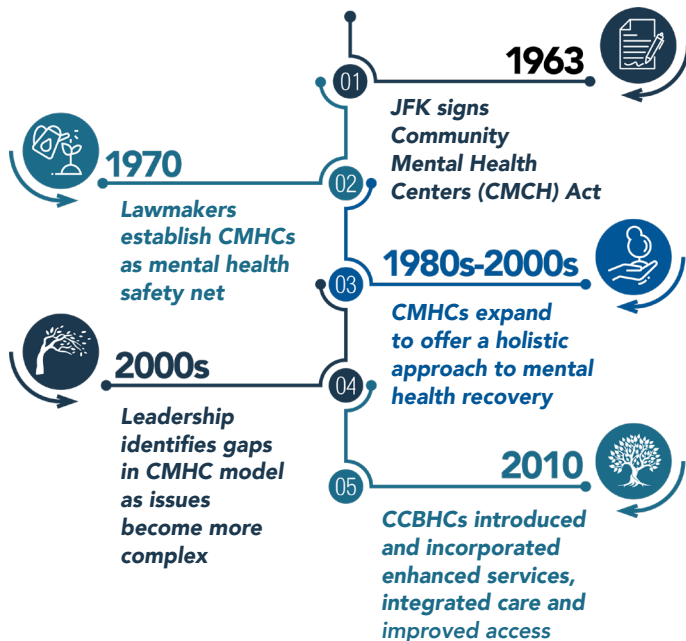
to support whole-person wellbeing.

CCBHCs provide:

- » *Mental health treatment*
- » *Physical health screenings*
- » *Substance use treatment*
- » *Social support services*



HOW DID CCBHCs COME ABOUT?



HOW DO CCBHCs TRANSFORM LIVES?

CCBHCs provide a safety net addressing nine core services:

- » *Mental health and substance use*
- » *Primary care screening/monitoring*
- » *Skills for improving health and daily life*
- » *24/7 crisis services*
- » *Screening, diagnosis and risk assessment*
- » *Targeted case management*
- » *Community-based mental healthcare for veterans*
- » *Peer, family support counseling services*
- » *Patient-centered treatment planning*

CCBHCs can serve clients faster than non-CCBHCs, and they are able to *provide* increased services to adults and children in need.



HOW DO CCBHCs SAVE THE STATE MONEY?

CCBHCs save money by diverting clients from jails and prisons, hospitals, and first responder calls. This saves Oklahoma millions in penal care and helps hospitals and first responders manage client loads better.

Loss of access does not result in a loss of need. Without CCBHCs, constituents will still seek assistance from local, city, and state entities that are not designed to manage such needs and that have no financial plan in place to address these needs.



It's a question of *when*, not *if* Oklahoma pays for care.



Without CCBHCs, people in need are faced with:

- » *Inadequate access to care*
- » *More expensive care*
- » *Unnecessarily complicated levels of care*

